

Meet Geodesy – Map Extension Activity

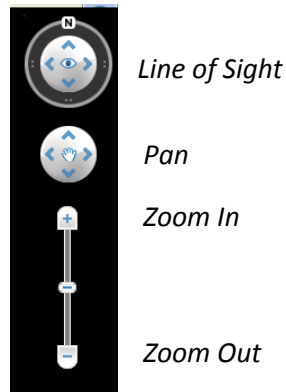
Objectives:

- Report latitude and longitude position of cities on world map
- Become familiar with GIS tools, terms, etc

- 1) Open Google Earth

Overview

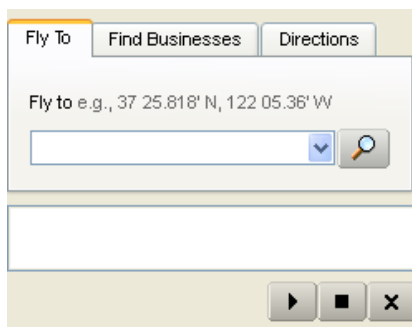
- 2) Using the tools on the right, Zoom Out so that you can see the whole world



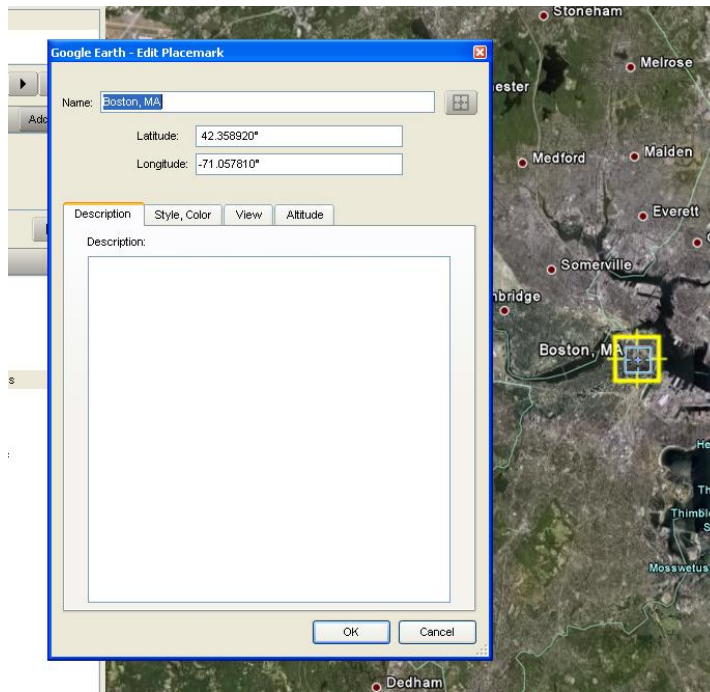
- 3) Your Places and Layers are displayed on the left side of the screen
- 4) If you click inside a box beside a layer or place you will turn it ON or OFF – it will display or disappear from the screen
- 5) Be sure the Borders and Labels layer in the Layers list is turned ON.

Data Collection

- 7) You can have Google Earth Fly To a location using the Fly To tab on the top of the menu at the left.



For example, if you type in 'Boston, MA' it will take you to Boston. You can then right click on the location and select Properties to get the latitude and longitude coordinates for the location.

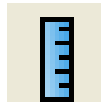


8) Using the Fly To tool as discussed above, record the location of the US cities in the table below:

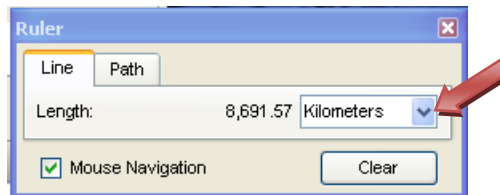
City	Latitude	Longitude
Seattle, WA		
Washington, DC		
Honolulu, HI		
Denver, CO		
Your Home Town:		

9) Now try the same thing for some other cities around the World:

City	Latitude	Longitude
Montreal, Canada		
Cairo, Egypt		
Oslo, Norway		
Tokyo, Japan		
Santiago, Chile		



10) Using the Ruler Tool, find the distance between your home town and Cairo, Egypt. Report the distance in Kilometers and in Miles (Use the pull down menu to change the units).



_____ Kilometers

_____ Miles