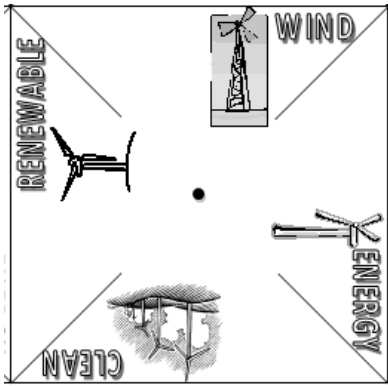
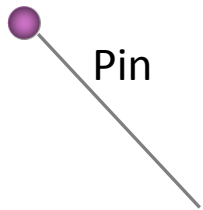


# Assembling Your Pinwheel

## MATERIALS



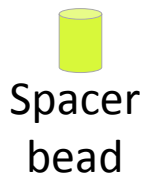
Pinwheel template



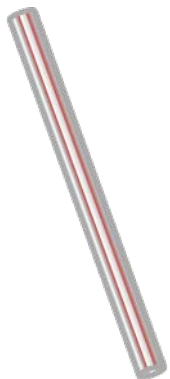
Pin



Foam piece



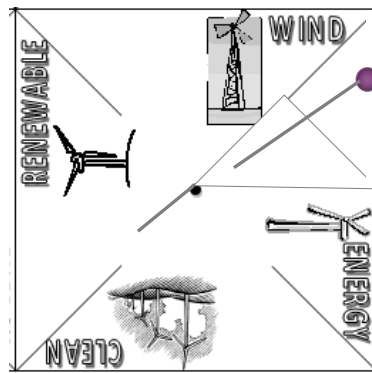
Spacer bead



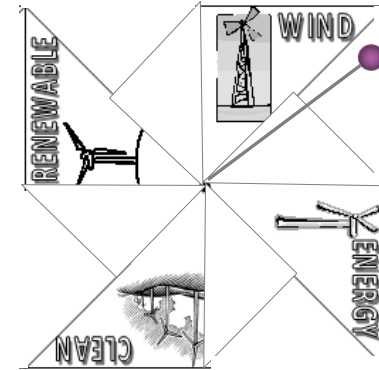
Straw

## ASSEMBLY

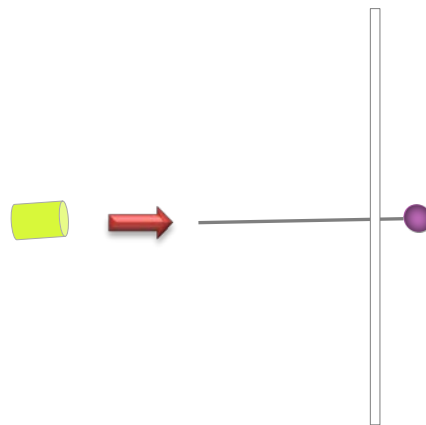
- From back to front, insert pin through each corner hole in turn



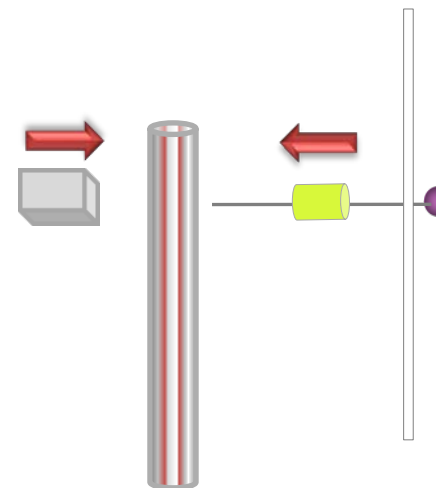
- Once all corners are pierced, from front, insert pin through middle hole



- Place spacer on pin behind pinwheel



- Push pin through top of straw and secure point of pin with foam piece



- Enjoy!

